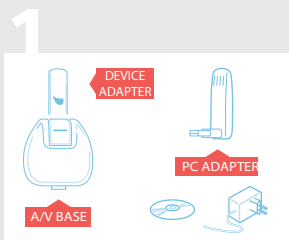


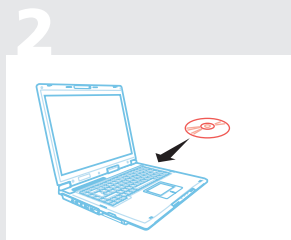



GETTING STARTED

Note: For further information, please refer to the User Guide included in the Installation CD




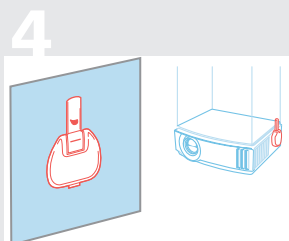
The package includes:
CD, PC Adapter, A/V Adapter
(Device Adapter + A/V Base),
and power supply.



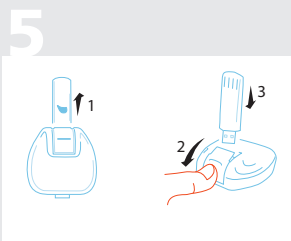
Insert the CD and install
software drivers. (A new gray
icon appears in system tray )



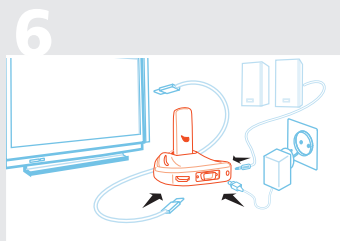
Plug the PC Adapter to a
USB port on your PC
(Tray icon turns red )





For vertical mounting:
Place the A/V Adapter on a
vertical surface (projector,
wall, display).



For table top positioning:
1. Remove Device Adapter from
A/V Base.
2. Slide shutter to show
top USB port.
3. Re-attach Device Adapter.

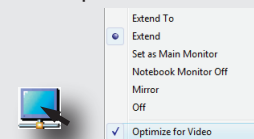


Connect the A/V Adapter using an
HDMI cable or using VGA and audio
(3.5mm plug) cables. Connect the
power cable.
You're done! (Tray icon turns green ,
display icon is on )

Quick Tips for Best Performance

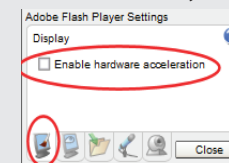
Playing video from your PC?

1. Use Extend Mode, and limit the extended screen resolution to 720p (1280x720).
2. If available it is recommended to use Optimize for Video Mode.



Streaming video from the internet (e.g. Youtube)?

Make sure to Disable Hardware Acceleration on your Flash Player.



Using Windows Vista?

Use the AERO Desktop Theme.

Problems?

Right-click the Wireless USB Manager
taskbar icon and select Help,
or see Troubleshooting in the User
Guide (available on the installation CD).